



立臥簡易分度頭(24等分)

- MODEL ● 08110006 CC-6 (6")
 ● 08110008 CC-8 (7")
 ● 08110018 CC-8 (8")

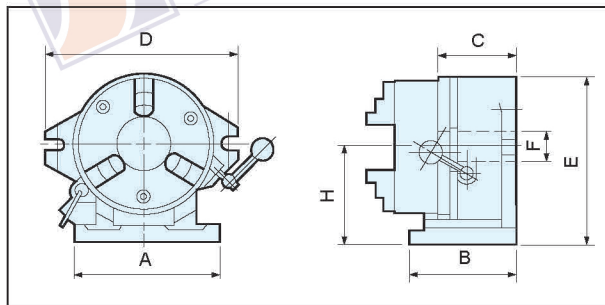


特性：

1. 材質：採用高強度FC300鑄件
2. 適用於銑床、鑽床，或其它特殊機械作簡易快速分度用。
3. 可附加特別附件，三爪夾頭，工作面盤及尾座。
4. 可做垂直方向及水平方向使用。
5. 最小簡易定位分度為15° (24等分)
6. 標準附件配有6片快速定位間格板其使用方法如下：

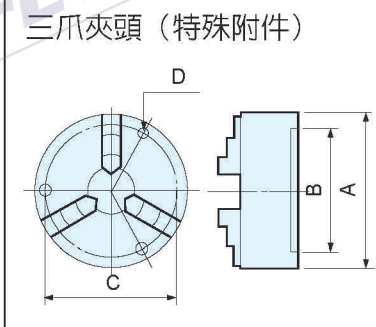
- A. 打開後蓋3支螺絲
- B. 裝入所要等分間格板，並將孔卡入定位螺絲
- C. 再將後蓋裝回，並將3支螺絲鎖上
- D. 將右側把手柄鬆開
- E. 將左側定位銷柄提起，使定位銷與齒盤分離
- F. 將三爪夾頭轉動直到定位銷自動插入齒盤
- G. 將右側把手柄鎖緊
- H. 以上步驟即可完成分度動作，即可開始加工

- | | |
|--------------------------------|-------------|
| 標準附件 | 特殊附件 |
| 1. 6片快速定位間格板
(2.3.4.6.8.12) | 1. 三爪夾頭 |
| 2. 分度把手柄x1只 | 2. 尾座 |
| | 3. 工作面盤 |



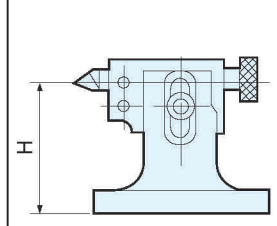
訂購編號	型號	A	B	C	D	E	F	H	夾頭	主軸孔	淨重	毛重	裝箱尺寸	備註
08110006	CC-6 (6")	188	115	84	254	225	50	130	6"	36				
08110008	CC-8 (7")	238	148	98	310	270	63	155	7"	63				
08110018	CC-8 (8")	238	148	98	310	270	63	155	8"	63				

單位:mm



訂購編號	型號	A	B	C	D	備註
08130006	YK-6	160	130	145	M8	進口普通
08130007	YK-7	190	155	172	M10	進口普通
08130008	YK-8	200	165	180	M10	進口普通
08132006	SC-6	167	130	147	M10	台製普通
08132007	SC-7	192	155	172	M10	台製普通
08132008	SC-8	202	160	176	M10	台製普通
08134006	SK-6	167	130	147	M10	台製強力
08134007	SK-7	192	155	172	M10	台製強力
08134008	SK-8	202	160	176	M10	台製強力

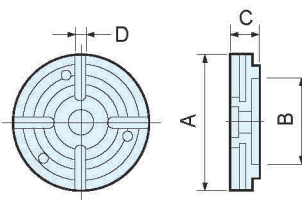
單位:mm



- 特性：
- 一、材質採用高強度FC300鑄件
 - 二、強立型設計，可做重切削加工使用。
 - 三、尾座高度，可自由調整。
 - 四、頂針距離可自由調整。

單位:mm

訂購編號	型號	淨重	通用機稱	備註
08102130	TS-130	120~143	CC-6	
08102160	TS-160	150~170	CC-8	



工作面盤 (特殊附件)

- 特性：
- 一、材質FC300鑄件
 - 二、工作面盤上有T型槽，可做異形工件加工

單位:mm

訂購編號	型號	A	B	C	D	淨重	備註
08106006	TA-6	204	130	39	14		CC-6(6")
08106007	TA-7	255	155	45	14		CC-8(7")
08106008	TA-8	255	160	45	14		CC-8(8")



SIMPLE INDEX SPACER

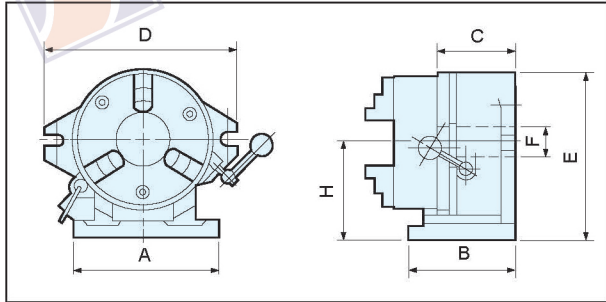
- MODEL ● 08110006 CC-6 (6")
 ● 08110008 CC-8 (7")
 ● 08110018 CC-8 (8")



FEATURES:

This Simple Index Spacer is to be mounted on milling machine, drill-ing machine and other machine tools for indexing during machining process. equipping CHUCK with big inside diameter, working range is up to 2 1/2" in diameter. Index Spacer can work horizontally and vertically. There is 24-Slots master plate inside Index Spacer, and other subplates in 2,3,4,6,8,12 slots as spare parts. The index process for the index number other than 24 is as follows:

1. Open rear cover.
2. Insert sub plate to master's.
3. Close the cover.
4. Loosen the lock handle at the right hand side.
5. Move pin handle at the left hand side to separate pin and master plate.
6. Turn the chuck until the slot of master and Sub plates aligned.
7. The pin will insert the slot automatically.
8. Fasten the lock handle.
9. The process is completed machining can then be started.



Standard Accessories

1. Master plates X 6pcs (2,3,4,6,8,12)
2. Handle X1pc.

Optional Accessories

1. Scroll chuck
2. Tail Stock
3. Dividing plates
4. Dividing fork set.
5. Work table

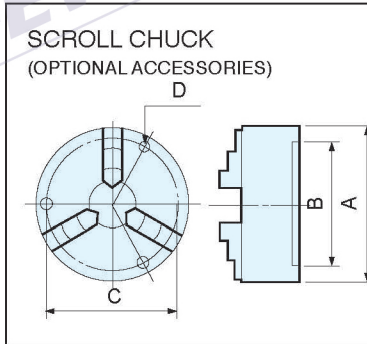
Unit:mm

ORDER NO.	MODEL	A	B	C	D	E	F	H	CHUCK	HOLE	N.W.	G.W.	SHIPMENT SIZE	REMARK
08110006	CC-6 (6")	188	115	84	254	225	50	130	6"	36				
08110008	CC-8 (7")	238	148	98	310	270	63	155	7"	63				
08110018	CC-8 (8")	238	148	98	310	270	63	155	8"	63				

Unit:mm

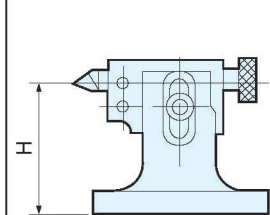


TAIL STOCK (OPTIONAL ACCESSORIES)



SCROLL CHUCK (OPTIONAL ACCESSORIES)

ORDER NO.	MODEL	A	B	C	D	REMARK
08130006	YK-6	160	130	145	M8	
08130007	YK-7	190	155	172	M10	
08130008	YK-8	200	165	180	M10	
08132006	SC-6	167	130	147	M10	
08132007	SC-7	192	155	172	M10	
08132008	SC-8	202	160	176	M10	
08134006	SK-6	167	130	147	M10	
08134007	SK-7	192	155	172	M10	
08134008	SK-8	202	160	176	M10	

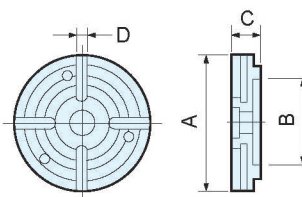


FEATURES:

1. Rigid material casting iron FC300.
2. Heavy duty Machining Designed.
3. The Center Has been hardness HRC50°~52°.

Unit:mm

ORDER NO.	MODEL	N.W.	N.W.	FOR	REMARK
08102130	TS-130	120~143		CC-6	
08102160	TS-160	150~170		CC-8	



WORK TABLE (OPTIONAL ACCESSORIES)

FEATURES:

1. MATERIAL: FC300
2. THE Table with T-Slots for heavy duty machining.

Unit:mm

ORDER NO.	MODEL	A	B	C	D	N.W.	REMARK
08106006	TA-6	204	130	39	14		CC-6(6")
08106007	TA-7	255	155	45	14		CC-8(7")
08106008	TA-8	255	160	45	14		CC-8(8")