

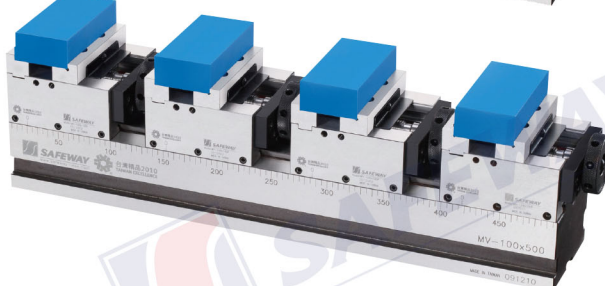
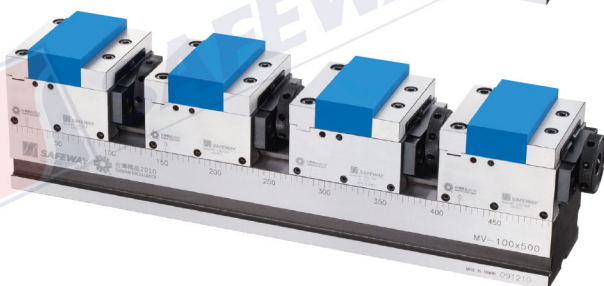
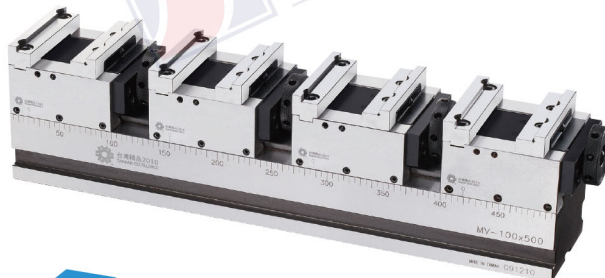
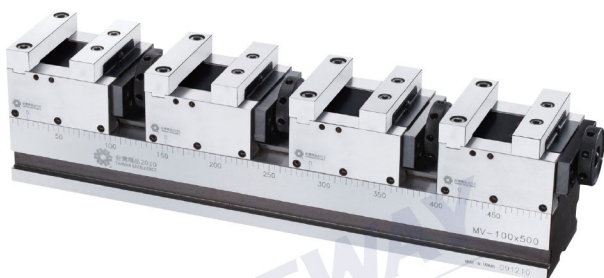


彈性化並列式虎鉗 FLEXIBLE YES VISE

100100P

- MODEL ● 41610030 MV-100100P-300
 ● 41610040 MV-100100P-400
 ● 41610050 MV-100100P-500
 ● 41610060 MV-100100P-600
 ● 41610070 MV-100100P-700

- MODEL ● 41710030 MV-100100PS-300
 ● 41710040 MV-100100PS-400
 ● 41710050 MV-100100PS-500
 ● 41710060 MV-100100PS-600
 ● 41710070 MV-100100PS-700



MV-100100PS

標準附件

1. 虎鉗滑座 × 2-5座 (MV-100100P)
2. 把手 6mm × 1支 (HA-6)
3. 導正鍵 18mm × 2只 (M6 × 10L × 2支)
4. 壓塊 × 4只 (M16 × 50L × 4支)
5. 手輪 (HA-50)
6. 停止檔 (ST-05) (M5 × 6L × 2-5支)

特殊附件

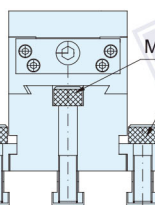
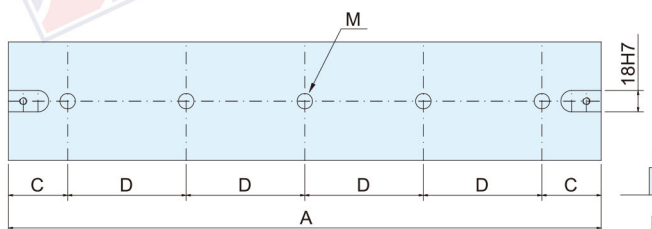
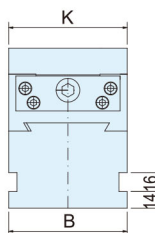
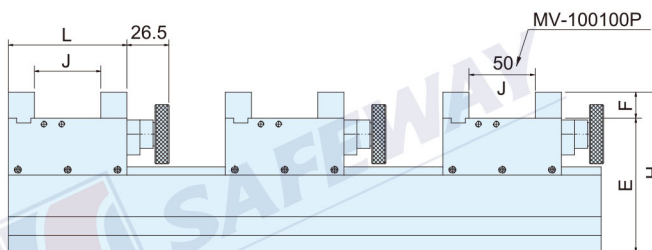
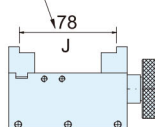
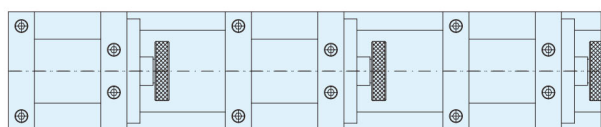
1. 固定螺絲 (M16 × 80L × 3-7支)
2. T型螺帽 (M16 × 3-7只)

Standard accessories

1. Yes Vise × 2-5 pcs (MV-100100P)
2. Handle × 1 pc (HA-6)
3. Guide Key × 18mm × 2 pcs (M6 × 10L × 2 pcs)
4. Vise locked block × 4 pcs (M16 × 50L × 4 pcs)
5. Wheel handle × 1 pc (HA-50)
6. Stopper (ST-05) (M5 × 6L × 2-5 pcs)

Optional accessories

1. Socket cap screw (M16 × 80L × 3-7 pcs)
2. T-Nut (M16 × 3-7 pcs)



Unit: mm

ORDER NO.	MODEL	A	B	C	D	E	F	H	J	K	L	M (Optional)	N (Standard)	MV-100100P	N.W.	REMARK
41610030	MV-100100P-300	300	100	50	100	113	18	131	0-50	100	100	M16 × 80L × 3	M16 × 50L × 4	2 Pcs	24	
41610040	MV-100100P-400	400	100	50	100	113	18	131	0-50	100	100	M16 × 80L × 4	M16 × 50L × 4	3 Pcs	33.5	
41610050	MV-100100P-500	500	100	50	100	113	18	131	0-50	100	100	M16 × 80L × 5	M16 × 50L × 4	4 Pcs	43	
41610060	MV-100100P-600	600	100	50	100	113	18	131	0-50	100	100	M16 × 80L × 6	M16 × 50L × 4	4 Pcs	47.9	
41610070	MV-100100P-700	700	100	50	100	113	18	131	0-50	100	100	M16 × 80L × 7	M16 × 50L × 4	5 Pcs	57	
41710030	MV-100100PS-300	300	100	50	100	113	18	131	0-78	100	100	M16 × 80L × 3	M16 × 50L × 4	2 Pcs	22.3	
41710040	MV-100100PS-400	400	100	50	100	113	18	131	0-78	100	100	M16 × 80L × 4	M16 × 50L × 4	3 Pcs	30.8	
41710050	MV-100100PS-500	500	100	50	100	113	18	131	0-78	100	100	M16 × 80L × 5	M16 × 50L × 4	4 Pcs	39.6	
41710060	MV-100100PS-600	600	100	50	100	113	18	131	0-78	100	100	M16 × 80L × 6	M16 × 50L × 4	4 Pcs	47.9	
41710070	MV-100100PS-700	700	100	50	100	113	18	131	0-78	100	100	M16 × 80L × 7	M16 × 50L × 4	5 Pcs	56.0	